

Talkin' Loud

Maunick/Bull/Harvey
Transcription by Guido Pietrella

Intro

gva

Verse 1

gva

Bridge

1

gva

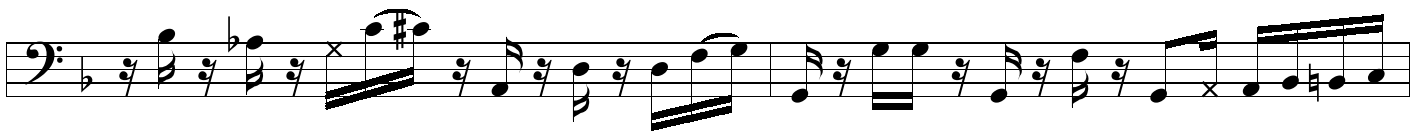
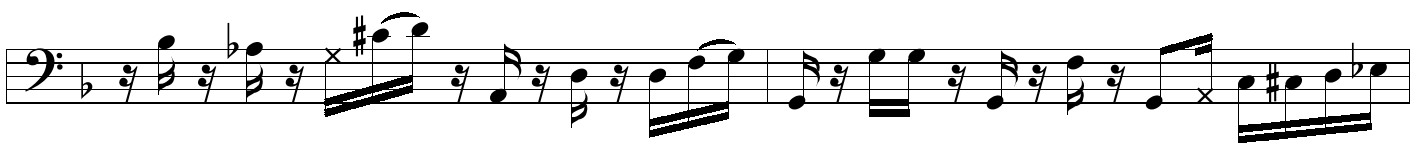
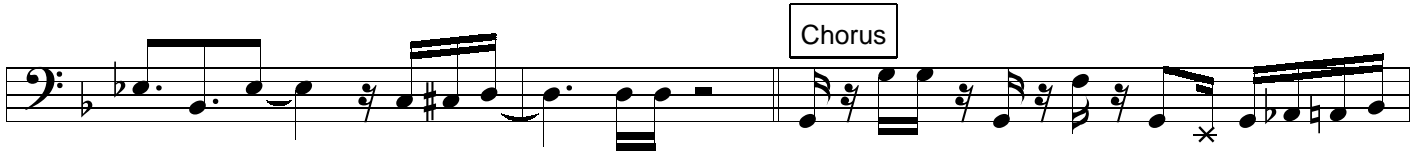
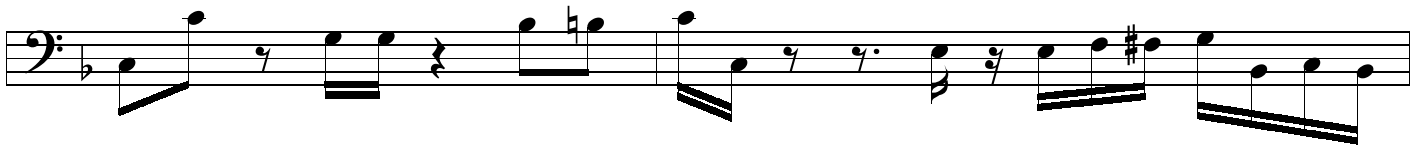
Chorus

gva

Verse 2

Bridge

gva



This image shows a page of musical notation for a bass line, consisting of ten staves. The notation is written in a bass clef with a key signature of one flat (B-flat). The music features a variety of rhythmic patterns, including eighth and sixteenth notes, and rests. There are several dynamic markings, such as 'x' and 'b', and various accidentals (sharps, flats, and naturals). The notation is arranged in a single column, with each staff containing a line of music. The overall style is that of a technical exercise or a short piece of music for a bass instrument.